

# Data sheet

## series Flex - WN



### **PRODUCT SPECIFICATION**

SK H2O protec construction waterstop series Flex according to factory standard is a permanently flexible sealing profile made of thermoplastic polymer, PVC-P "reinforced spring steel", that is used to seal construction joints in waterproof concrete structures with high water pressures.

### **Characteristics / Advantages**

- high tensile strength and elongation at break
- high permanent flexibility and high-load bearing capacity
- suitable for water pressure and settlements
- resistant to all natural media acting aggressively to concrete (if applicable)
- resistant to a wide range of chemical substances (tests required for each additional specific situation)
- standard resistant
- supply of systems for easy handling on site
- weldable by using butt joints on site

### **Application**

- joint sealing in concrete structures
- construction joint sealing system for in-situ concrete

#### Typical structures

- commercial buildings, cellars, underground car parks

# Data sheet series Flex - WN



## **Standards / Directives**

- general appraisal certificate
- Works standard
- WU- Directives DAfStb
- Welding instructions

## **Test certificate / Approvals**

- general appraisal certificate
- external monitoring by MPA NRW
- internal monitoring

## **PRODUCT DATA**

### **Material**

- PVC-P (Polyvinyl chloride with plasticizer / P: plasticized)

### **Colour**

- black

### **Packaging**

- supplied as standard rolls (25 m), pre-cuts and systems

# Data sheet

## series Flex - WN



---

### MECHANICAL PROPERTIES

according to factory standard

---

**Shore A hardness**

$78 \pm 5$

---

**Tensile strength**

$\geq 10$  MPa

---

**Elongation at break**

$\geq 275$  %

---

**Tear propagation resistance**

$\geq 12$  kN/m

---

**Low temperature performance**

Elongation at break at  $-20^{\circ}\text{C} \geq 200\%$

---

**Performance after weathering**

Tensile strength  $\leq 20\%$   
Elongation at break  $\leq 20\%$   
Modulus of elasticity  $\leq 50\%$

valid change of average values relative to the initial value

---

**Performance of the weld at shear test**  
**short-term joining factor fz**

break outside of weld  $\geq 0,6$

---

**Fire behaviour**

class B2

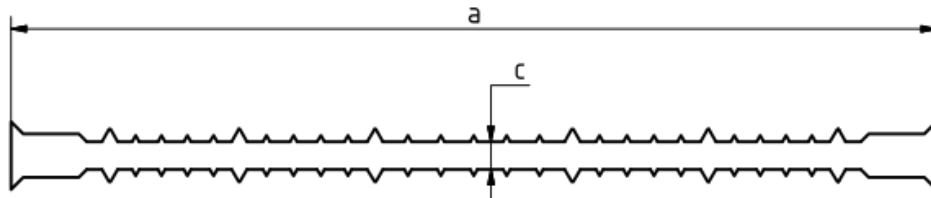
---

values differing for bitumen compatibility

---

# Data sheet

## series Flex - WN



Description	Dimension a	Dimension c
Flex 10 WN	100	4,5
Flex 15 WN	150	4,5
Flex 19 WN	190	4,5
Flex 24 WN	240	4,5
Flex 32 WN	320	5

All dimensions in mm



Reinforced spring steel in a distance of about 20cm.  
As a result, the waterstop is stabilized transversely.