

Data sheet - series FMS



PRODUCT SPECIFICATION

SK H2O protec expansion joint series FMS according to DIN 7865, part 1 and 2, is a permanently flexible sealing profile made of elastomer, SBR or EPDM, that is used to seal expansion joints in waterproof concrete structures with high water pressures.

Characteristics / Advantages

- high tensile strength and elongation at break
- high permanent flexibility and high-load bearing capacity
- suitable for water pressure and large settlements
- resistant to all natural media acting aggressively to concrete
- resistant to a wide range of chemical substances (tests required for each additional specific situation)
- resistant to bitumen
- supply of systems for easy handling on site
- vulcanizable by using butt joints on site

Application

- joint sealing in concrete structures
- expansion joint sealing system for in-situ concrete

Typical structures

- underground car parks, bridges, trough and bridge constructions
- rail tunnels and road tunnels
- water construction plants

Data sheet - series FMS



Standards / Directives

- DIN 18197
- DIN 7865, part 2
- WU- Directives DAfStb
- ZTV-ING, Riz-Ing
- Vulcanizing instructions

Test certificate / Approvals

- latest manufacturer's test certificate
- certificate of conformity - DIN 7865
- external monitoring by MPA NRW
- internal monitoring

PRODUCT DATA

Material

- SBR elastomer (styrene butadiene rubber)
- EPDM elastomer (ethylene-propylene-diene monomer)

Colour

- black

Packaging

- supplied as standard rolls (25 m)

Data sheet - series FMS



MECHANICAL PROPERTIES according to DIN 7865, part 2

Shore A hardness	62 ± 5
-------------------------	------------

Tear strength	≥ 10 MPa
----------------------	---------------

Elongation at break	≥ 380 %
----------------------------	--------------

Compression set	168h / 23°C $\leq 20\%$ 24h / 70°C $\leq 35\%$
------------------------	---

Tear propagation resistance	≥ 8 kN/m
------------------------------------	---------------

Performance after heat ageing	Shore A hardness change ≤ 8 Tear strength ≥ 9 MPa Elongation at break $\geq 300\%$
--------------------------------------	--

Low temperature performance	≤ 90 Shore A
------------------------------------	-------------------

Tension set	$\leq 20\%$
--------------------	-------------

Metal adhesion	$\geq 1,5$ kN
-----------------------	---------------

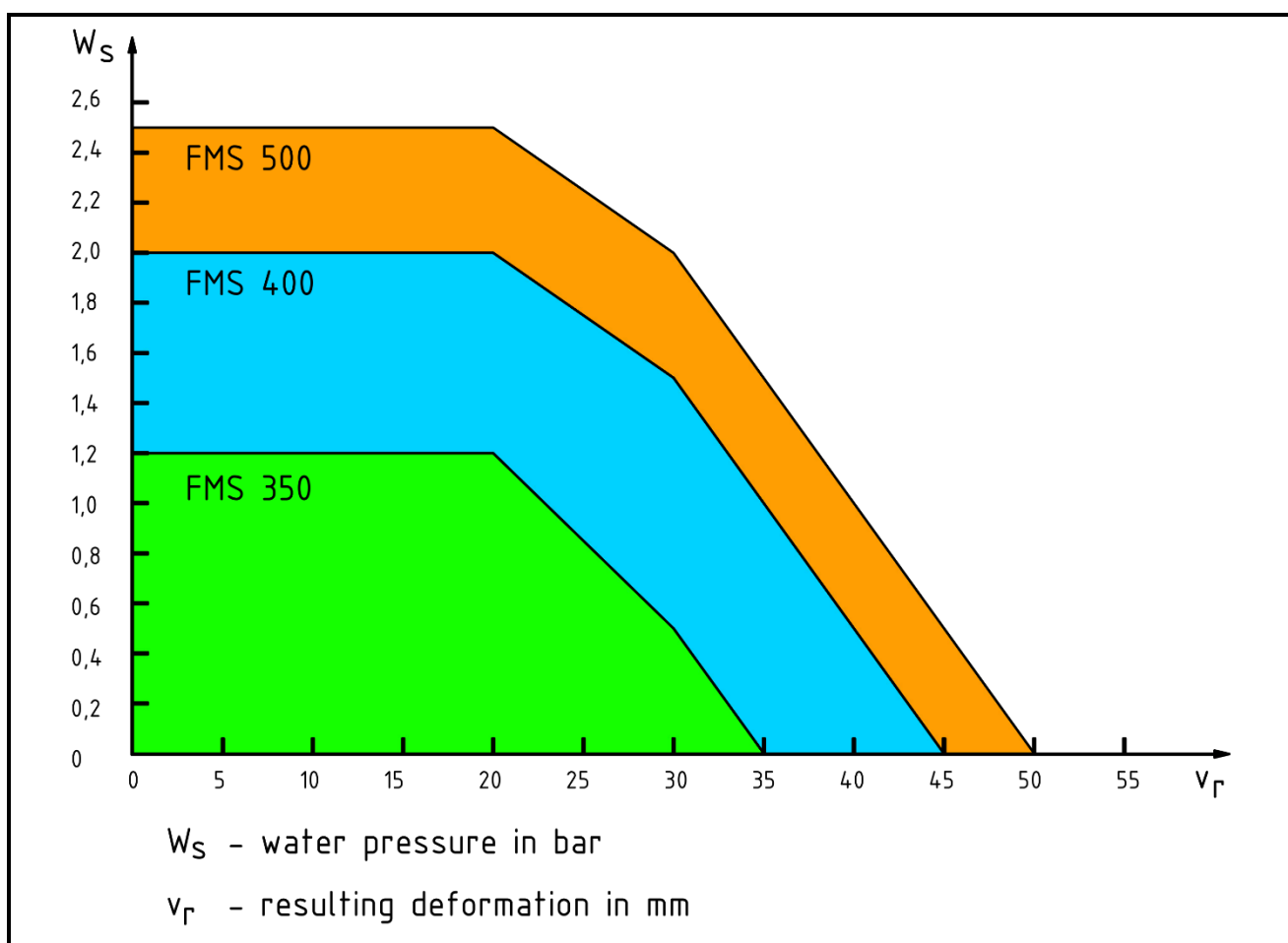
Performance after conditioning in hot bitumen	Residual deformation $< 20\%$ Tear strength ≥ 7 MPa Elongation at break $\geq 300\%$
--	---

Performance after ozone ageing	No cracks
---------------------------------------	-----------

Data sheet - series FMS



Selection diagram for waterstops acc. to DIN 7865

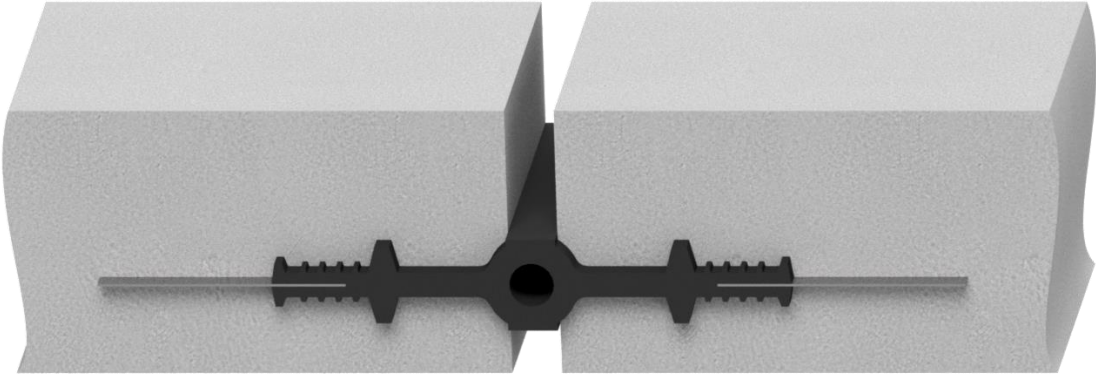
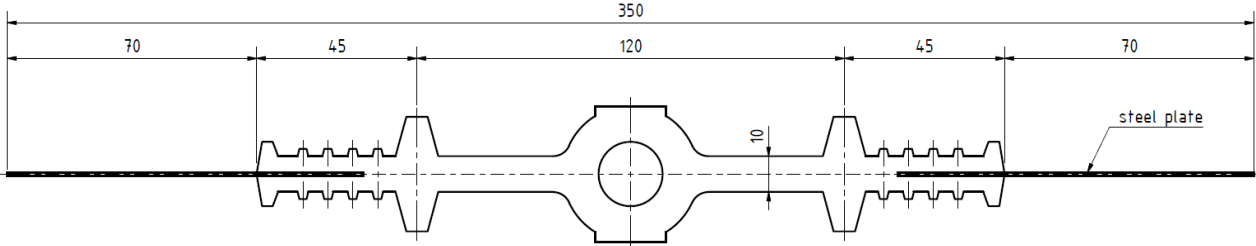


excerpt from DIN 18197:2018-01

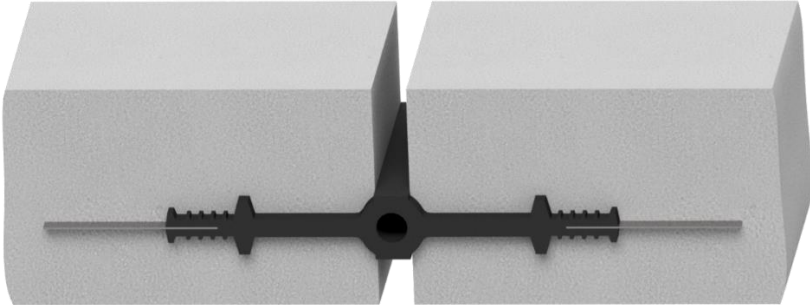
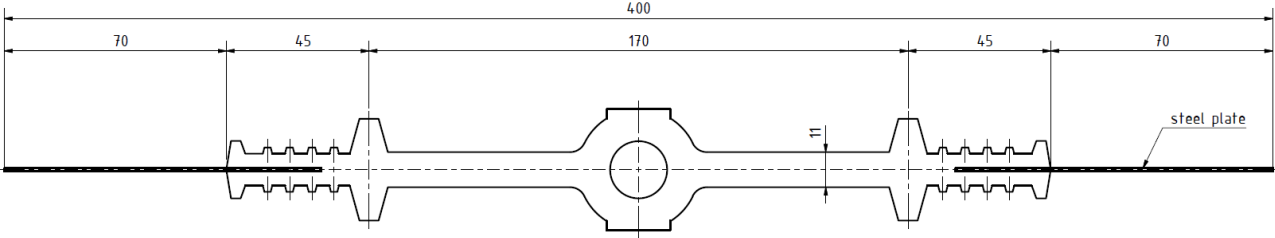
Data sheet - series FMS



FMS 350



FMS 400

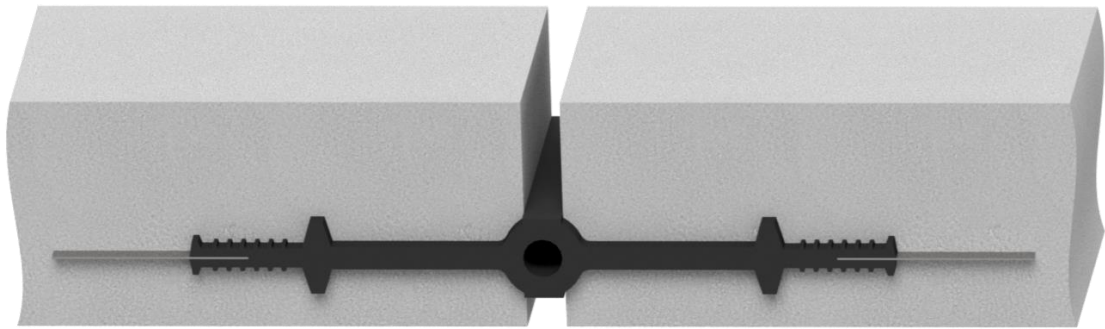
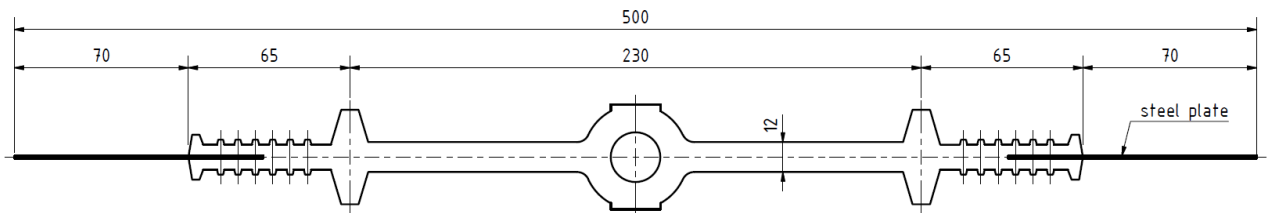


All dimensions in mm

Data sheet - series FMS



FMS 500



All dimensions in mm